

UTU Conference Denver/Nashville

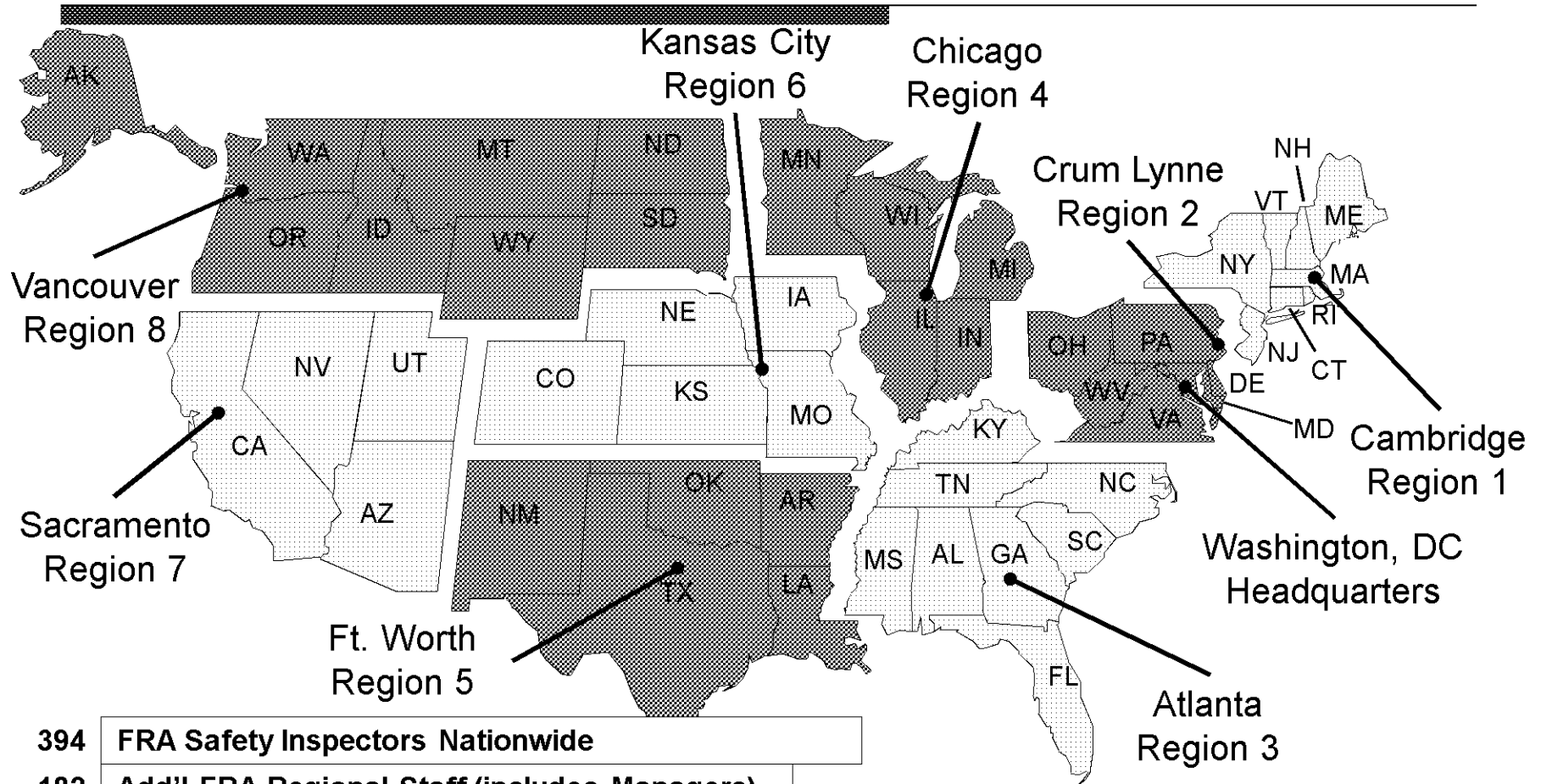
Summer, 2008

UTU REQUESTED TOPICS

- Peer Prevention Programs and Operation RedBlock**
 - Training and Education on Reality - Railroads are a Dangerous Place to Work. Drugs and Alcohol Kill People in This Industry**
 - Prescription and Over the Counter Medications Issue – The Coming Medical Standards**
 - Shy Bladder Resolution Process**
-

Federal Railroad Administration

Eight Regions



394	FRA Safety Inspectors Nationwide
182	Add'l FRA Regional Staff (includes Managers)
165	State Inspectors – 30 States

WHY Do We Have These Rules?

**MIS Report Data From the 39
Largest Railroads That Had 400,000
or More Annual Employee
Workhours**

Random Drug Positive Rate

Year	Collect-ions	Positive	Refusals	Positive Rate
1995	28,361	254	10	0.93
1997	25,759	188	9	0.76
2000	27,663	202	16	0.79
2003	29,021	246	24	0.93
2005	34,324	228	21	0.73
2006	35,539	205	13	0.61
2007	38,071	201	11	0.56

Random Positives by Drug Type

Year	THC	Coc	Amph	Opi	PCP
1995	159	68	26	6	1
1997	117	59	16	5	0
2000	118	59	25	1	0
2003	135	84	27	3	0
2005	114	95	22	8	0
2006	105	77	37	6	0
2007	109	70	23	4	0

Drug Test Refusals (All Tests)

Year	Flat Refusal	Adult-erated	Substi-tuted	Shy Bladder	TOTAL
2000	Unknown	0	0	Unknown	28
2001	Unknown	0	0	Unknown	26
2002	Unknown	0	0	Unknown	21
2003	22	2	9	7	40
2004	33	8	9	5	55
2005	17	7	6	4	34
2006	16	1	2	6	25
2007	13	2	2	3	20

Alcohol Test Refusals (All Tests)

Year	Flat Refusal	Shy Lung	TOTAL
2000	Unknown	Unknown	10
2001	Unknown	Unknown	8
2002	Unknown	Unknown	12
2003	5	3	8
2004	9	3	12
2005	5	5	9
2006	2	1	3
2007	3	1	4

2007 Pre-Employment Drug Tests

	Collections	Positives
Engineers	332	3
Trainmen	7,987	107 & 2 refusals
Dispatchers	431	6
Signalmen	827	8
Others	1,642	7
TOTAL	11,219	133 (1.2%)

2007 Reasonable Suspicion/ Cause Drug Tests

	Collections	Positives
Engineers	959	6 & 1 Refusal
Trainmen	1,843	11 & 2 Refusals
Dispatchers	73	1 Refusal
Signalmen	77	1 & 1 Refusal
Others	255	8 & 1 Refusal
TOTAL	3,207	32 (1.0%)

2007 Return-To-Duty Drug Tests

	Collections	Positives
Engineers	223	3
Trainmen	612	4 & 1 Refusal
Dispatchers	34	0
Signalmen	47	2
Others	183	3
TOTAL	1,099	13 (1.2%)

2007 Follow-Up Drug Tests

	Collections	Positives
Engineers	1,379	16
Trainmen	1,890	25
Dispatchers	100	0
Signalmen	540	8
Others	1,008	23
TOTAL	4,917	72 (1.5%)

All Federal Alcohol Tests

Year	Collect-ions	Refusals	Violations (0.04 or more)	Other Positives (0.02-0.039)
2007	50,660	4	132 (0.27%)	88 (0.17%)
2006	46,350	3	97 (0.22%)	53 (0.11%)
2005	46,392	9	110 (0.26%)	77 (0.16%)
2004	40,838	12	99 (0.27%)	51 (0.12%)
2003	34,891	8	91 (0.28%)	49 (0.14%)

Random Alcohol Test Results

Year	Collect-ions	Refusals	Violations (0.04 or more)	Other Positives (0.02-0.039)
2007	42,123	1	74 (0.18%)	53 (0.13%)
2006	38,851	2	54 (0.14%)	43 (0.11%)
2005	37,847	7	59 (0.17%)	53 (0.14%)
2004	34,984	6	57 (0.18%)	41 (0.12%)
2003	29,110	2	51 (0.18%)	33 (0.11%)
2002	27,680	7	46 (0.19%)	35 (0.13%)
2001	29,158	5	55 (0.21%)	40 (0.14%)

2007 Reasonable Suspicion/Cause Alcohol Tests

	Collections	Refusals	Violations (0.04 or more)	Other Positives (0.02-.039)
Engineers	776	0	12	4
Trainmen	1,509	1	24	11
Dispatchers	64	1	2	0
Signalmen	43	0	0	0
Other	236	1	3	2
TOTALS	2,628	3	41 (1.7%)	17 (0.65)

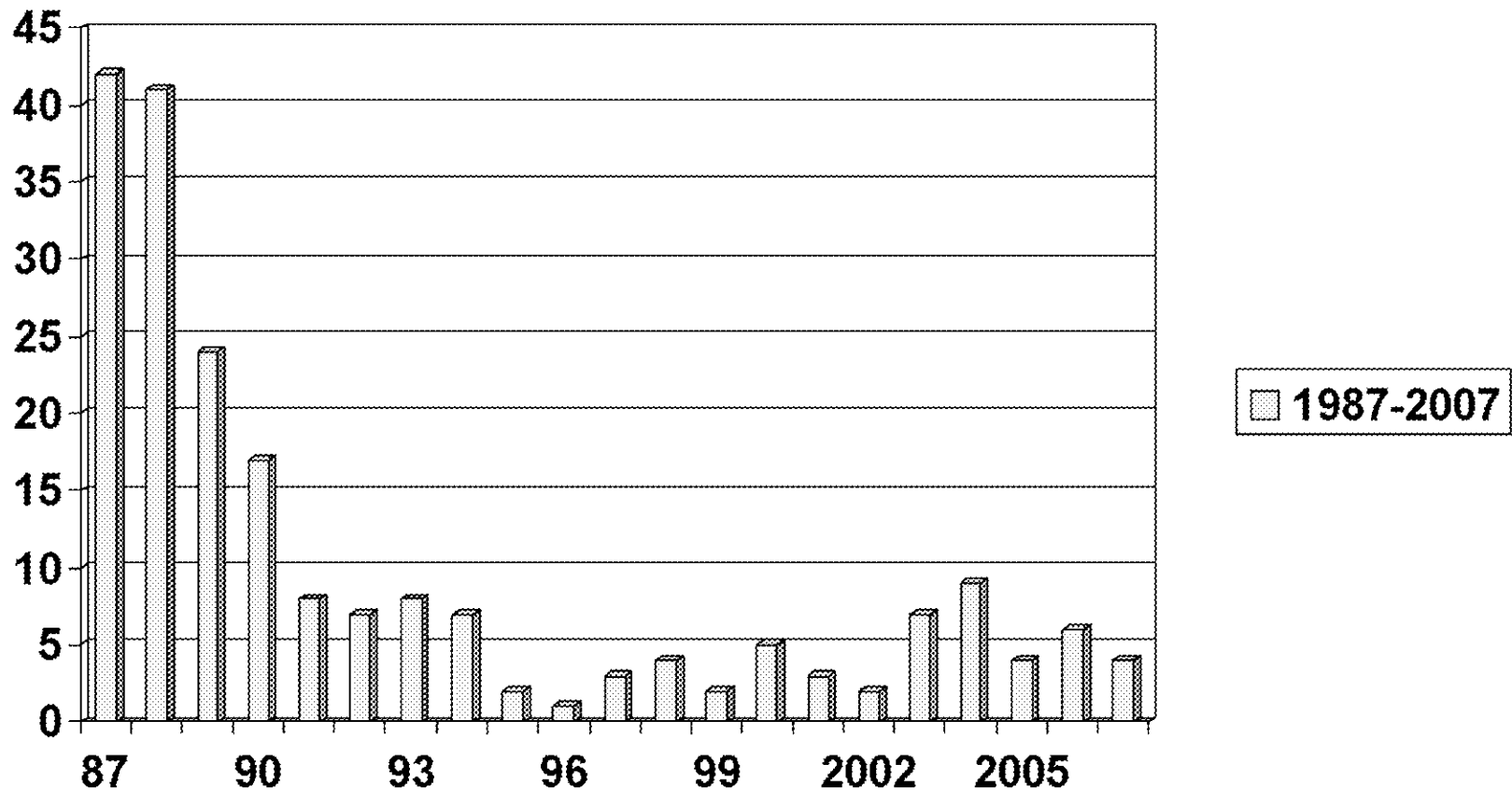
FRA Post-Accident Test Results

1987 to 2007

Year	Qualifying Events	# Employees Tested	# Employees Positive	Employee Positive Rate	Lab Positives Downgraded to Negative
1987	179	770	42 (3A-39D)	5.5%	
1988	178	682	41 (3A-38D)	6.0%	
1989	161	607	24 (6A-18D)	4.0%	
1990	149	524	17 (1A-16D)	3.2%	
1991	157	552	8 (2A-6D)	1.4%	
1992	109	332	7 (1A-6D)	2.1%	
1993	128	403	8 (2A-6D)	2.0%	
1994	115	294	7 (2A-5D)	2.4%	
1995	82	225	2 (0A-2D)	0.9%	
1996	73	197	1 (0A-1D)	0.5%	1 (1.0%)
1997	86	240	3 (2A-1D)	1.3%	3 (2.5%)
1998	68	153	4 (0A-4D)	2.6%	1 (3.3%)
1999	80	200	2 (0A-2D)	1.0%	4 (3.0%)
2000	91	255	5 (0A-5D)	1.9%	0 (1.9%)
2001	83	210	3 (0A-3D)	1.4%	0 (1.4%)
2002	73	189	2 (0A-2D)	1.1%	2 (2.1%)
2003	100	249	7 (1A-6D)	2.8%	1 (3.2%)
2004	124	302	9 (2A-6D-1R)	3.0%	5 (5.0%)
2005	119	310	4 (0A-4D)	1.3%	4 (2.6%)
2006	88	253	6 (0A-6D)	2.4%	5 (4.3%)
2007	106	275	4 (0A-4D)	1.5%	6 (3.6%)

Post-Accident Tests

No. Positive Tests



Collectively

- **676 Federal Violations in Less than 50,000 Tests in 2007**
- **Additional Hundreds Positive in Company Authority Testing**
- **We are doing Better BUT the Usage Rate Remains a Major Safety Concern!**

“Training and Education on Reality!”

NEXT MAJOR SAFETY ISSUE

- **Prescription and Over-The-Counter (OTC) medications**
 - **NPRM on Medical Standards for Safety Critical Employees**
 - **NPRM Adjusting 219.103 on use of Prescription and OTC**

RISK MANAGEMENT

- **Peer Prevention Programs (C3RS)**
 - **Operation RedBlock Type Programs**
 - **Close Call Programs**
 - **CAB—Changing At-Risk Behaviors**
 - **STEEL—Safety Trough Employees Exercising Leadership**
 - **CSA-- Clear Signal (for) Action**

<http://www.fra.dot.gov/us/content/1910>

SHY BLADDER

- Labor Leadership Letter to FRA on Resolving on-going Shy Bladder Concerns
- In 2007 the MIS Data indicates
 - Flat Refusal- 13
 - Adulterated/Substituted- 4
 - Shy Bladder- 3 (Possible Medical Expert Disagreement)

Part 40 Changes

- **Specimen Validity Testing (SVT) procedures effective August 25, 2008**
- **Changes for Lab, MRO, Collector, Employer, and Employee**
- **Lab must perform requisite SVT**
- **DO Collections will continue to occur only when there is specific reason to believe that the donor may be attempting to evade the process**

Part 40 Changes (8-25-08)

- **Direct Observation (DO) collections will be required for all Federal RTD and FU tests**
- **The Collector/Observer will be required to have the DONOR to raise and/or lower clothing as well as turn around to check for prosthetic devices designed to carry clean urine**

Part 40 Changes (8-25-08)

- **If a Donor admits to a MRO or Collector that you adulterated or substituted the specimen that admission is evidence of a refusal.**
- **There is no split specimen testing allowed for an invalid result.**

Collection Area of Focus

- **Collector is required on all Federal Collections to CHECK the contents of the donor's wallet.**
 - **The collector is checking for products that can be used to alter the specimen**
 - **The collector is to allow the donor to retain his/her wallet after the check**
 - **The collector is not required to handle the wallet but should have the donor display the items in the wallet**